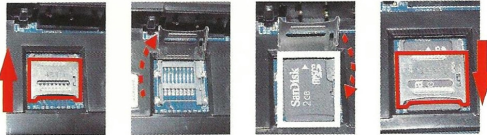


## USING PERIPHERALS

### 1. Using Micro SD Card

- 1) Remove the battery cover and battery then lift the Micro SD Card holder.
- 2) Insert a correctly oriented Micro SD card.
- 3) Fold the card holder and slide it downward.

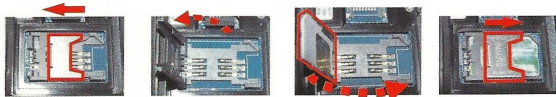
The Micro SD Card slot support memory card only.  
It does not support SD I/O peripherals.



### 2. Put in SIM Card

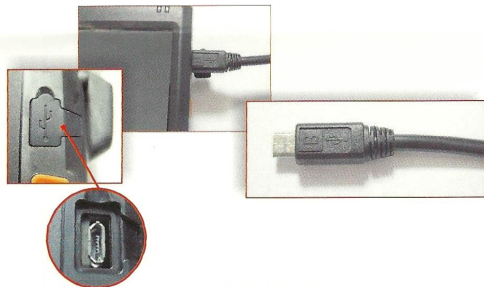
- 1) Remove the battery cover and battery.
- 2) Push the iron cover to left (unlock the slot) and lift the slot.
- 3) Insert a correctly oriented SIM card.
- 4) Fold the card holder and slide it to right to lock it.

**Note:** Availability depends on PDT model.



### 3. USB Connection

Connect the USB client cable on synchronize data and charge with a computer.



## RESETTING DEVICE

### 1. Warm Reset

- 1) If an application hangs, initiate Warm Reset to terminate the application.
- 2) Warm Reset will close all applications and clear the working RAM, but all files will be preserved.
- 3) To perform warm Reset, press "Fn"+"Alpha"+"Enter" buttons simultaneously.

#### CAUTION:

Try Warm Reset before you initiate Cold Reset. All applications will be closed, and working RAM as well as all files will be cleared if you initiate the Cold Reset. It is strongly recommended to back up your files to Flash ROM, Flash Card or PC.

### 2. Cold Reset

- 1) You can use Cold Reset to initialize the device if the WinCE.NET OS locks up or in case a Warm Reset has no effect.
- 2) To perform Cold Reset, press "Power", "Fn", and "Enter" buttons simultaneously.
- 3) Device will boot up after Cold Reset.

## PD-280 Quick Guide



## USER AND PRODUCT SAFETY

- Do not stare into the laser beam directly or shine it into eyes.
- Never use strong pressure onto the screen or subject it to severe impact, as the LCD panel could become cracked and possibly cause personal injury. If the LCD panel is broken, never touch the liquid inside, because the liquid irritates the skin.
- Use only the original approved AC adapter with the PDT. Use of an unapproved AC Adapter could result in electrical problems, or even cause a fire or electrical shock to the user.
- Do not disassemble the PDT. Servicing should be done by Authorized Suppliers only. If the device or accessories gets damaged due to wrong handling or unauthorized repair, warranty is void. In case the warranty seals are broken, warranty is void too.
- Make regularly back-ups of all important data.
- Under no circumstance will Manufacturer be liable for any direct, indirect, consequential or incidental damages arising out of use or inability to use both the hardware and software and/or any data loss, even if Manufacturer has been informed about the possibility of such damages.



Do not throw this product in the home waste bin.



This device complies With part 15 of the FCC rule Operation is subject to the following two conditions. (1) This device may not cause harmful interference. (2) This device must accept any interference received. Including interference that may cause undesired operation. Complies with 21 CFR 1040.10 and 1040.11 except for deviations pursuant to Laser Notice No. 50, Date June 24 2007.

## BEFORE GETTING STARTED

### 1. Open the package and check every accessory:



### CAUTION:

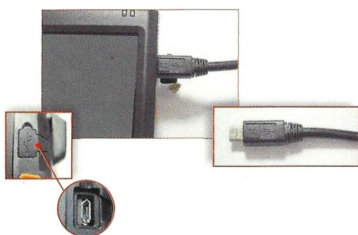
The device will be powered on when you install Battery Pack. Power off device after touch screen calibration and charge battery for at least 6 hours. Do not turn on the device at the first time until battery is charged for at least 6 hours. Always charge battery at 0°C~40°C (32°F~104°F) environment temperature. The Charger LED will be turned to green color when battery charging is finished.

### 2. Installing the Battery Pack

- 1) Push the battery cover latches close to each and lift the battery cover.
- 2) Insert the Battery Pack into the battery compartment with the label facing up, and make sure the battery fits in place.
- 3) Place the battery cover by inserting the top first, and then press the bottom in firmly. Push the battery cover latches to opposite position to secure the cover to the PDT.

### 3. Connect Power Adapter to charge the PDT

- 1) Insert one side of USB cable into the side USB port of PDT.
- 2) Connect the other side of USB cable to AC adapter.



## USING THE KEYPAD

The keypad comprises 22 keys (numeric, navigation, functional and Fn) and 3 scan buttons.

- 1) Key "Alpha" switch between the Numeric and Alpha modes.
- 3) Press "Fn" to toggle Function Mode.

### Special Characters

Sequence of Keys	Description
Alpha 1 : 1	: \
Alpha 2 : 2	.. :
Alpha 0 : 0	[ ]
Alpha # : #	= %

### Special Characters

Sequence of Keys	Description
Fn 1 : 1	@
Fn 2 : 2	^
Fn 3 : 3	+
Fn 4 : 4	-
Fn 5 : 5	&
Fn 6 : 6	*
Fn 7 : 7	/
Fn 8 : 8	€

### Special Functions

Sequence of Keys	Description
Fn ESC	Tab
Fn Alpha	Caps
Fn BS	Audio Mute
Fn 4 ON	Paste
Fn Del	Del
Fn 7 PWS	Copy
Fn 0 II	Space
Fn + ...	Start Menu

## BATTERY PRODUCT SAFETY

Lithium-ion Battery Packs might get hot, explode, ignite and/ or cause serious injury in case of misuse.

Please follow the safety warnings listed below:

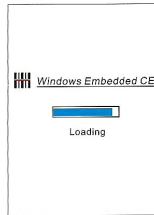
- Do not throw the battery into fire. Do not expose the battery to high temperatures.
- Do not connect the positive Battery Pack with negative Battery Pack to each other with any metal object (like wire).
- Do not carry or store Battery Pack together with metal objects.
- Do not pierce the Battery Pack with nails or drills, strike the battery pack with a hammer, step on the Battery Pack or otherwise expose it to strong impacts, shocks or excessive force.
- Do not solder directly onto the Battery Pack.
- Do not expose Battery Pack to liquid or allow the battery contacts to get wet.
- Do not disassemble or modify the Battery Pack. The Battery Pack contains safety and protection measures, which, if damaged, may cause the Battery Pack to generate heat, explode or ignite.
- Do not discharge the batteries outside the PDT. Do not use the battery in another device then the PDT or series battery chargers. Otherwise, the Battery Pack can be damaged, the Battery Pack can be damaged or its life expectancy reduced. If the device causes any abnormal current to flow, it may cause the Battery Pack to become hot, explode or ignite and cause serious injury.
- In the event the Battery Pack leaks and the fluid gets into one's eye, do not rub the eye.  
Rinse well with water and immediately seek medical care.  
If left untreated, the battery fluid could cause damage to the eye.



## SETTING DEVICE

### 1. Initial Boot Up

The initial boot up screen will be displayed when you install battery pack at the first time. Do not remove Battery Pack when system is at initial boot up.



Carefully press and briefly hold stylus on the center of the target. Repeat as the target moves around the screen. Press the Esc key to cancel.



### 2. Calibrating Touch Screen

This calibration is already done by manufacturer. If you want to calibrate the touch screen again, please tap "Start" --- "Settings" --- "Control Panel" --- "Stylus" --- "Calibration" --- "Recalibrate", then hold the stylus and press on the center of each target as it moves around the screen.

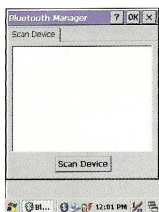
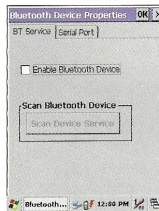
#### CAUTION:

Be sure to use the supplied stylus or plastic-tipped pens for touch screen display. Don't use pencil, pen or any sharp object on touch screen display.

### 3. Setting Up Wireless LAN

- 1) Tap "Start"---"Programs" --- "WLAN Manager" to open SCU.
- 2) Go to Main tab, tap "Enable/Disable Radio" button to Enable or Disable the WLAN.
- 3) Go to Profile tab, tap "Scan" button to connect/refresh the network.
- 4) Select a network, tap the "Connect" button or double tap it to create a new profile SSID.
- 5) And setting encryption of the network then tap "Commit" button to commit it.
- 6) Finally, you can view the SSID of the active network.

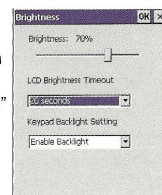
**Note:** WLAN availability depends on PDT model.



### 4. Bluetooth Device Properties

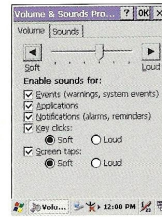
- 1) Tap "Start"---"Settings"---"Control Panel"---"Bluetooth Device Properties" to enable Bluetooth device.
- 2) Wait for 20 seconds to initialize the Bluetooth hardware correctly.
- 3) Tap Scan device button to search for Bluetooth devices.

**Note :** Bluetooth availability depends on PDT model.



### 5. Brightness Setting

The device is equipped with backlight for both LCD display and keypad. To adjust the LCD backlight brightness, Tap "Start"---"Programs" ---"Controls" --- "Brightness" to set both LCD and Keypad brightness.



### 6. Volume Adjusting

- 1) Tap "Start"---"Settings"---"Control Panel" --- "Volume & Sounds".
- 2) Adjust the volume bar to meet your demand.

#### Note:

To mute the sound, press the "Fn" key and then press "BS" key to turn off and on the sound.

## USING THE APPLICATIONS

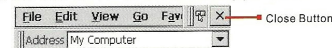
### 1. Execute an "Application"

Tap an application icon on the desktop, or tap "Start"---"Programs". Select one of the applications.



### 2. Close an "Application"

Tap the tab of "X" to close the application.



### 3. Using the Software Input Panel

- 1) Tap the "Keyboard" icon on the "task bar".
- 2) When Software Input Panel appears, input characters with the Stylus.

Keyboard input panel.



### 4. Task Switch

Win CE can execute multiple applications at the same time.

- 1) Tap "Task Switch" icon in the task bar.
  - 2) Select the task(s) you want in the task menu.
- During the execution of applications, when you select the menu "Desktop", brings the selected application to the foreground. It does not close the other applications.



## BAR CODE READING

#### CAUTION:

Remove the protective film from the scan window before use.

### 1. Start your application

### 2. Aim the scan window at the bar code

### 3. Press one of the three bar code reader trigger buttons

### 4. Aiming :

- 1D laser: aim the red laser beam on the center of the bar code
- Bar code can be read from 50 to 650 mm distance.

### 5. Check the bar code reading result

You can verify the result of the bar code reading in your application, by beep sound(s) or the LED indicator.

## OVERVIEW

